

# Hat Box

BY ANDOVER FABRICS



Lacy Days Quilt designed  
by: **Lucy Fazely**

Quilt Size: **50½" x 72"**

[andoverfabrics.com](http://andoverfabrics.com)

## About Hat Box

Romantic florals and feminine lace prints harken back to turn of the century fashion when stylish women of the day used hat boxes to store their stylish chapeaux.

andover

•  
•  
• [makower.uk](http://makower.uk)  
•

Free Pattern Download Available

1384 Broadway New York, NY 10018  
Tel. (800) 223-5678 • [andoverfabrics.com](http://andoverfabrics.com)

# Lacy Days Quilt



Introducing Andover Fabrics new collection: **HAT BOX** by Andover Fabrics

Quilt designed by Lucy A. Fazely

Quilt finishes 50½" x 72"

*Feminine and charming, this quilt will please anyone who loves roses. It is just the right size for a stunning wall quilt or cozy throw. The strippy setting is unusual, and the rose, brown, and creamy fabrics softly blend for an overall elegance.*

## Cutting Directions

**Note:** Read assembly directions before cutting patches. All measurements are cut sizes and include ¼" seam allowances. A fat ¼ is an 18" x 20"-22" cut. Borders and sashes are cut the exact lengths required plus ¼" seam allowances. WOF designates the width of fabric from selvedge to selvedge (approximately 42" wide).

### Fabric A

Cut (2) side borders 5½" x 62½", cut lengthwise  
Cut (2) top/bottom borders 5½" x 51", cut lengthwise

### Fabric B

Cut (3) squares 9¾" x 9¾", cut in half diagonally twice to make 12 quarter-square triangles  
Cut (4) squares 5½" x 5½", cut in half diagonally to make 8 half-square triangles  
Cut (11) squares 4½" x 4½", cut in half diagonally twice to make 44 quarter-square triangles (2 are not needed)

### Fabric C

Fussy-cut (1) sash 7½" x 60", cut lengthwise

### Fabric D

Fussy-cut (2) sashes 7½" x 60", cut lengthwise

### Fabric E

Cut (11) squares 4½" x 4½", cut in half diagonally twice to make 44 quarter-square triangles (2 are not needed)

### Fabric F

Cut (24) squares 2½" x 2½"

### Fabric G

Cut (28) squares 2½" x 2½"

## Fabric Requirements

		Yardage	Fabric
<b>Fabric A</b>	border	2 yards	9273-B
<b>Fabric B</b>	set	¾ yard	9274-P
<b>Fabric C</b>	sashes	1¾ yards	9275-B
<b>Fabric D</b>	sashes	1¾ yards	9275-P
<b>Fabric E</b>	units	fat ¼ yard	9277-G
<b>Fabric F</b>	units	fat ¼ yard	9278-G
<b>Fabric G</b>	units	fat ¼ yard	9278-P
<b>Fabric H</b>	units	fat ¼ yard	9279-E
<b>Fabric I</b>	units	fat ¼ yard	9279-G
<b>Fabric J</b>	units	⅛ yard	9280-E
<b>Fabric K</b>	units	fat ¼ yard	9280-L
<b>*Fabric L</b>	borders	⅞ yard	9281-P
<b>Backing</b>		3½ yards	9273-P

\*includes binding

### Fabric H

Cut (28) squares 2½" x 2½"

### Fabric I

Cut (9) squares 4½" x 4½", cut in half diagonally twice to make 36 quarter-square triangles

### Fabric J

Cut (14) squares 2½" x 2½"

### Fabric K

Cut (26) squares 2½" x 2½"

### Fabric L

Cut (7) strips 2½" x WOF for binding  
Cut (5) strips 1¾" x WOF, pieced to make the following:  
(2) side borders 1¾" x 60"  
(2) top/bottom borders 1¾" x 41"

### Backing

Cut (2) panels 40" x 59", pieced to fit quilt top with overlap on all sides

# Lacy Days Quilt

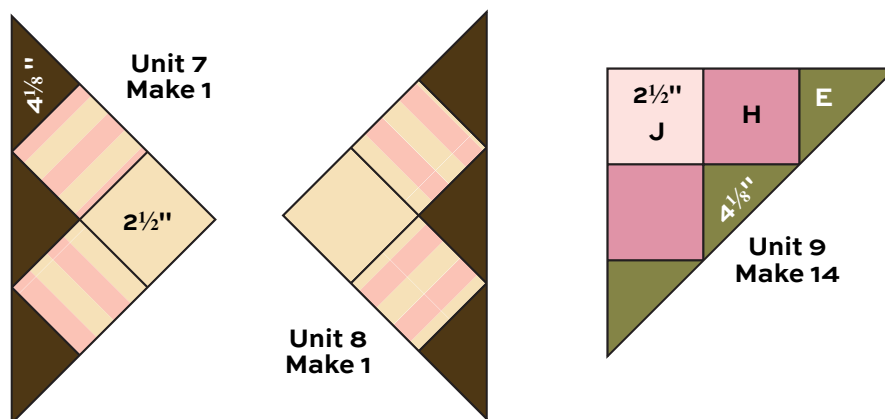
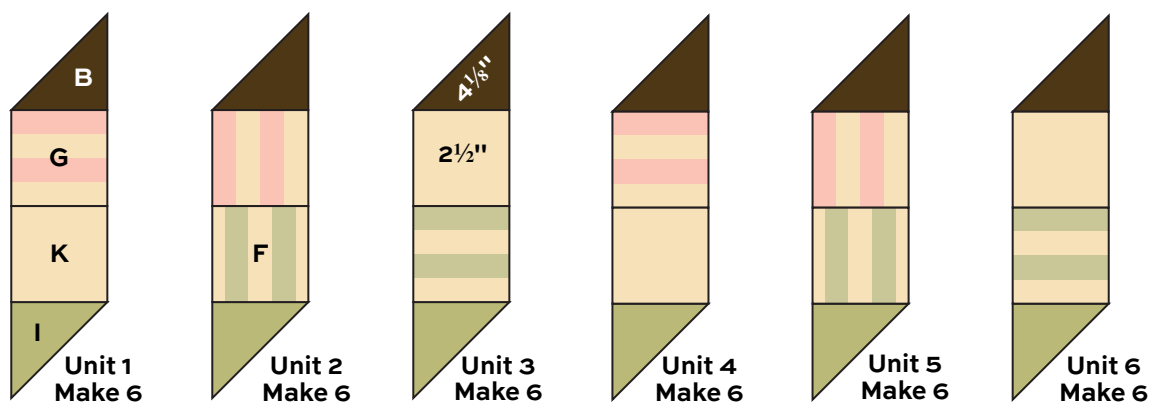
## Making the Quilt

1. Referring to the diagrams, join patches to make 6 of each Unit 1-6, noting the rotation of striped Fabrics F and G. Set aside.
2. Again noting orientation of striped Fabric G patches, join patches to make 1 Unit 7 and 1 Unit 8. Set aside.
3. Referring to the Quilt Diagram, join 6 each of Units 1, 2, and 3 to make a vertical column. Sew the Unit 7 to the bottom. Sew Fabric B  $5\frac{1}{8}$ " triangles to the top and bottom of the column. Likewise, join 6 each of Units 4, 5, and 6 to make a second column. Sew the Unit 8 to the bottom and Fabric B triangles to the top and bottom.

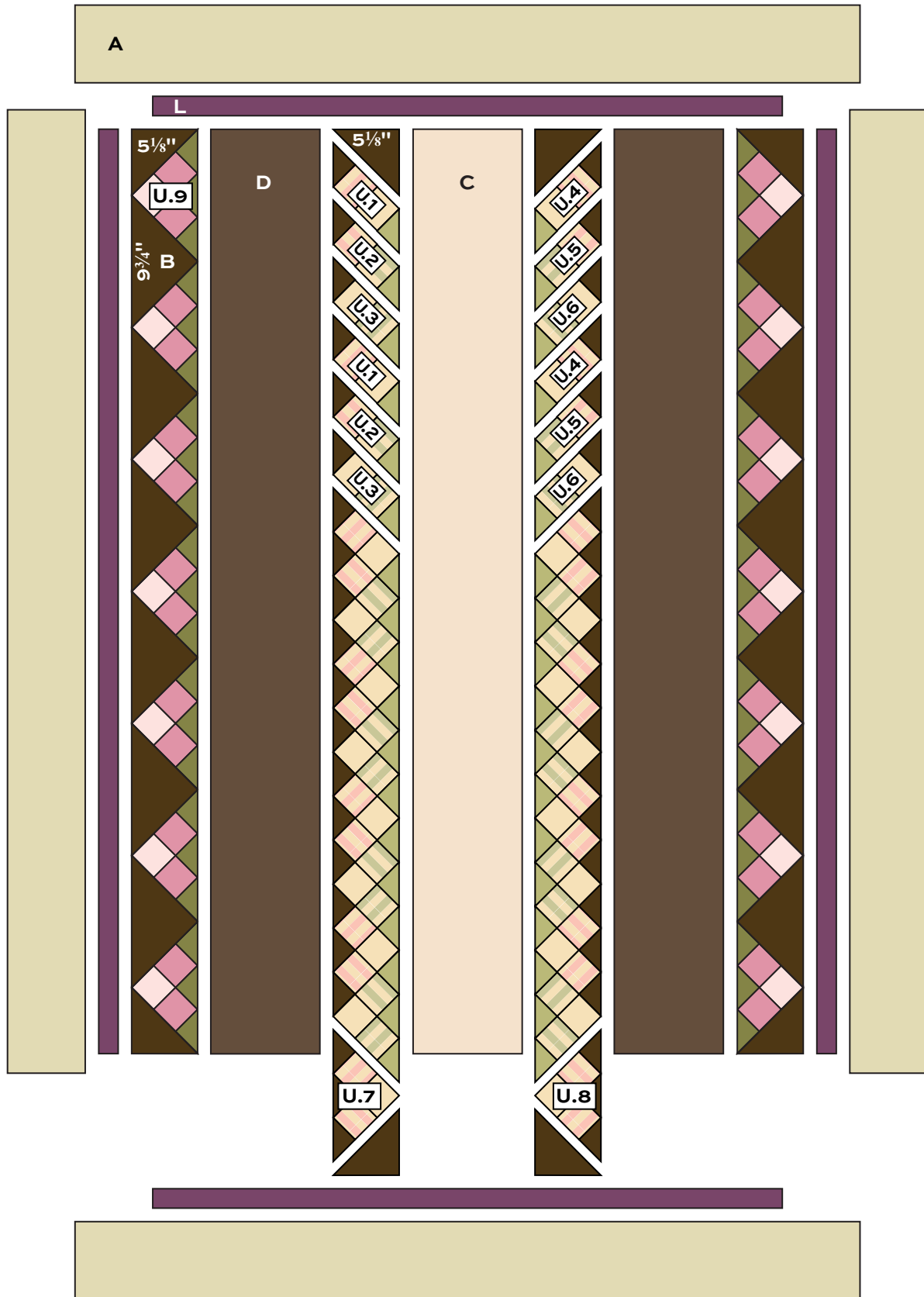
4. Join the 2 pieced columns to the sides of the Fabric C sash. Join Fabric D sashes to the quilt.
5. Join 7 Unit 9 alternately with Fabric B  $9\frac{3}{4}$ " quarter-square triangles. Sew Fabric B  $5\frac{1}{8}$ " triangles to the top and bottom. Sew to a side of the quilt, having Unit 9s touching the quilt. Repeat for the opposite side.
6. Sew Fabric L borders to the quilt, sides on first. Repeat with Fabric A borders.

## Finishing the Quilt

7. Layer the quilt with batting and backing and baste. Quilt in the ditch around borders and unit patches. Quilt around the printed motifs in the sashes and outer border. Bind to finish the quilt.



# Lacy Days Quilt



Quilt Diagram

# Hat Box

BY ANDOVER FABRICS



9273-B\*



9274-B



9275-B\*



9273-P\*



9274-P\*



9275-P\*



9277-B



9277-G\*



9277-L



9277-P



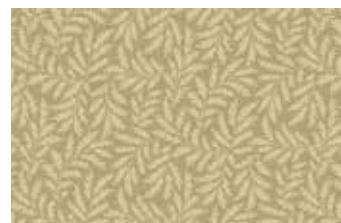
9279-B



9279-E\*



9279-G\*



9279-N



9278-G\*



9278-L



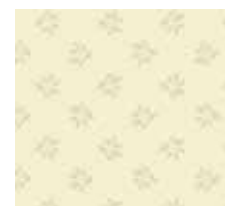
9278-P\*



9280-B



9280-E\*



9280-L\*



9281-B



9281-N



9281-P\*



9282-B



9282-E



9282-G

\*Indicates fabrics used in quilt pattern. Fabrics shown are 25% of actual size.

andover : makower uk

Free Pattern Download Available

1384 Broadway New York, NY 10018  
Tel. (800) 223-5678 • andoverfabrics.com